

Info @commercial-lynx.co.uk

COMMERCIAL PREMISES

Offices/Storage/R&D

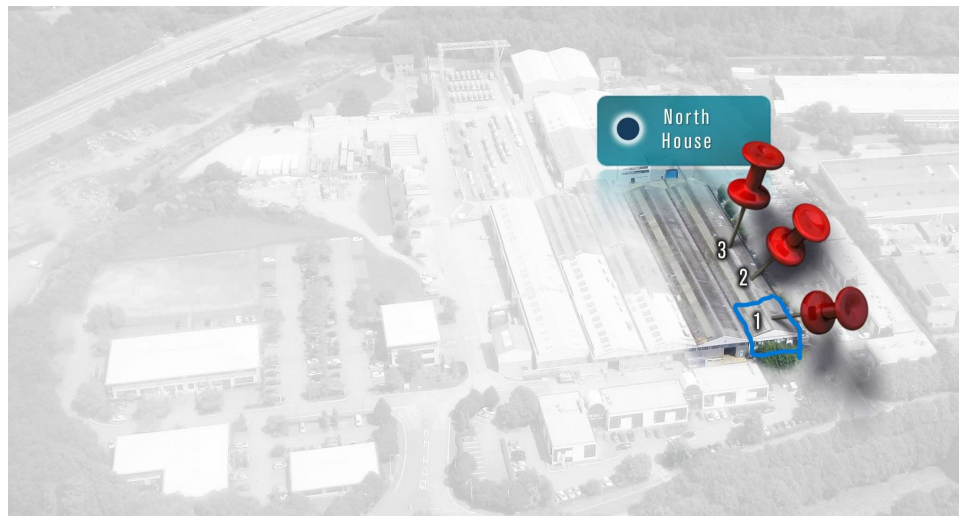
C 6000q ft / 557 sq m

GF North House 1 Bond Estate Milton Keynes

MK1 1SW

NEW LEASE AVAILABLE

- Ground floor Premises
- Flexible uses
- Parking
- Air conditioning to offices
- See www.commercial-lynxbond.uk
For Bond Estate details



Location:

Situated on the Bond Estate in Mount Farm Bletchley these premises are on an established commercial zone approximately a half mile from Central Bletchley, the MK Stadium and all the local amenities.

Description:

A ground floor end of terrace premise with the office entrance via a communal corridor with double glass loading doors to the side allowing access to the rear.

The premises have been used for storage and R & D purposes .

The property offers scope for a variety of uses including storage, light industrial, R & D and some leisure uses (stp.)

Features:

- **Corner position at entrance to estate**
- **Open plan layout allows some flexibility**
- **Offers secure storage**
- **New lease to be agreed.**

Areas: c6000 sq ft split between offices and rear storage area.

Terms:

The premises are available on a lease to be granted outside the Landlord And Tenant Act 1954 for 3 to 5 years.

Rent:

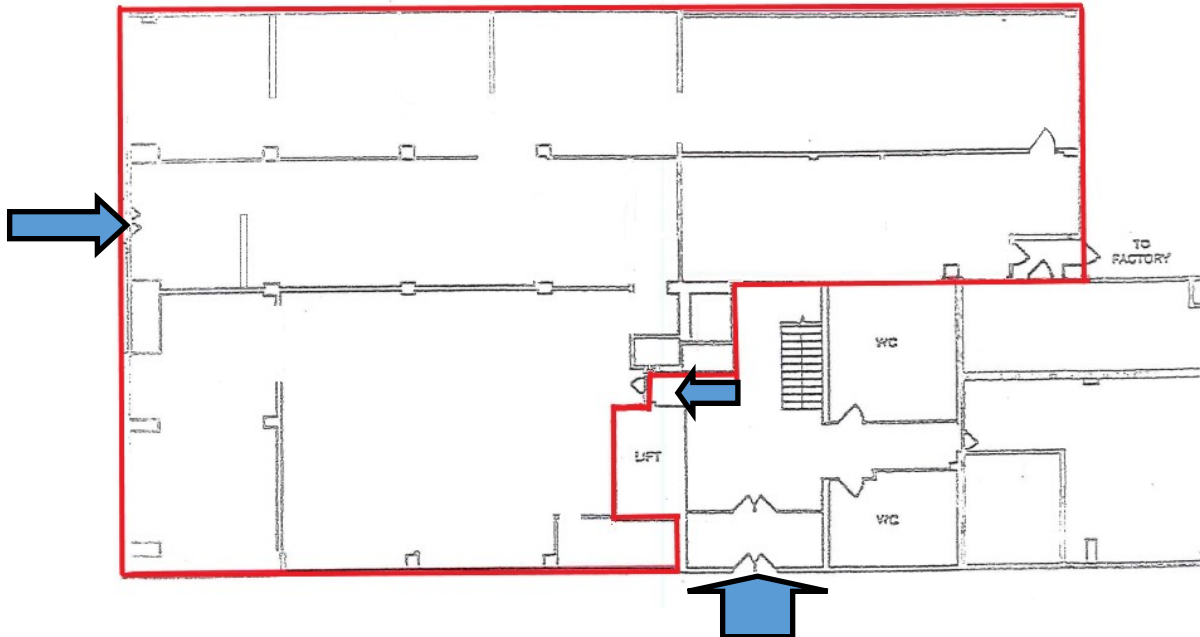
£30,000 per annum exclusive

Business Rates. The building is assessed with a rateable value of £32,250 with rates payable per annum of approx. £14512 pa. Small Business rates relief may be available.

Viewing: Strictly by appointment with the agent: Commercial Lynx 01908 37 37 88



NORTH HOUSE ONE
GROUND FLOOR



Viewing:

By appointment only.

Please call Commercial Lynx

01908 37 37 88

